



## LG flooring guide

- Familia • Palace • Bright • Easy Clean Pet
- Supreme • Delight • Econowood • Leisure
- Eq • Rexcourt • Origin • Unite
- VIP Conductive Tile • Wall Covering Medistep Wall.

# Familia

## Specification

Size : (T) 1.0mm x (W) 2m x (L) 35m/Roll

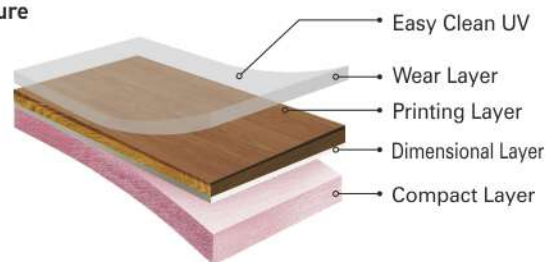
## Features :



## Applications :

Residential

## Structure



FAM 180A



FAM 182A



FAM 182B



FAM 1808



FAM 1809



FAM 1816



FAM 1817



FAM 1829



# Palace

## Specification

Size : (T) 1.5mm x (W) 2m x (L) 25m/Roll

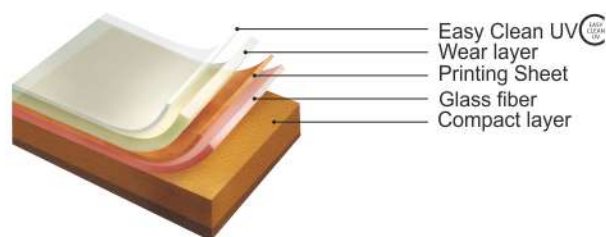
## Features :

- Anti microbial
- Anti contamination
- Quick and easy installation
- Elegant & realistic patterns
- High dimensional stability with glass fiber layer
- Excellent anti-indentation with extra hard surface

## Applications :

Residential and Office

## Structure



PAL 81



PAL 82



PAL 83



PAL 85



PAL 211



PAL 242



PAL 592



PAL 881



PAL 7771



PAL 8143



PAL 8332



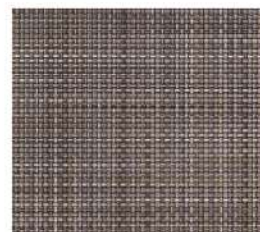
PAL 1604



PAL 1608



PAL 9203



PAL 9201

# Bright

## Specification

Size : (T) 1.6mm x (W) 2m x (L) 25m/Roll

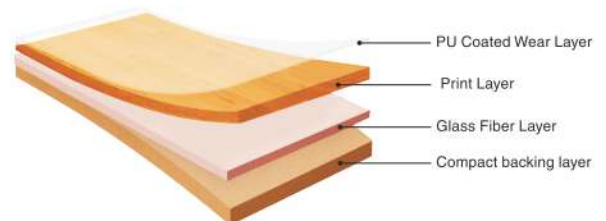
## Features :

Special Nano Silver Treatment gives excellent resistant to Bacteria

## Applications :

Residential, Office and Retail

## Structure



BR 92001



BR 92002



BR 92003



BR 92005



BR 92101



BR 92201



BR 92202



BR 92203



BR 92205



BR 92301



BR 92304



BR 92305



BR 92308



# Easy Clean Pet

## Specification

Size : (T) 1.8mm x (W) 1.83m x (L) 40/50m/Roll

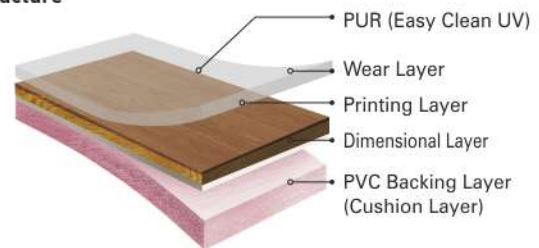
## Features :

- Easy maintenance with UV surface treatment :  
Contaminant-resistance with its Kalkumi(easy-to-clean) function
- Phthalate Free Plasticizer usage :  
Our family can breathe and live in eco-friendly environment every day
- Superior Design :  
Improving print sharpness and optimal gloss to create wood-like look
- Hard Construction & Dimensionally Stable:  
Glass paper inlaid structure allows strong resistance to heat and moisture.
- Performance Kalkumi :  
Contaminants are easily removed on Kalkumi PET!
- Posong-ee (meaning dry & soft in Korean) :  
Enjoy non-sticky flooring material!

## Applications :

Residential

## Structure



KPT 1301



KPT 1302



KPT 1303



KPT 2331



KPT 2332

# Supreme

## Specification

Size : (T) 1.8mm x (W) 2m x (L) 20m/Roll

## Features :

Durable and dimensionally stable :

- Not easily worn out against heavy traffic
- Glass paper inlaid structure allows strong resistance to heat and moisture

Environmentally friendly :

- Formaldehyde and toxic gas free
- 100% recyclable

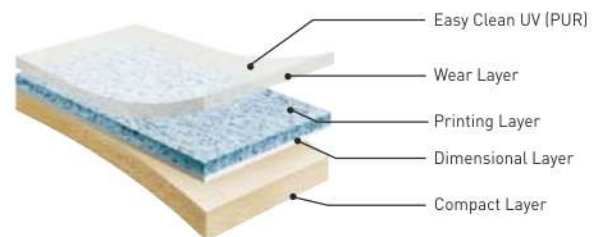
Low maintenance cost and anti-bacterial :

- Easy Clean UV allows easy maintenance
- Superior resistance to outer contaminants and bacteria

## Applications :

Office Zone, Retail, Multipurpose

## Structure



SPR 1302



SPR 1303



SPR 9032



SPR 7774



SPR 8802



# Delight

## Specification

Size : (T) 2.2mm x (W) 2m x (L) 20m/Roll

## Features :

Excellent chemical resistance :

- Specially customized surface coating reinforces chemical resistance

Anti-bacteria & antibiosis:

- Special Nano silver treatment give excellent resistance to bacteria

Acoustic but commercial enough :

- Impact sound reduction (15db)
- Castor chair suitability (fulfilled)

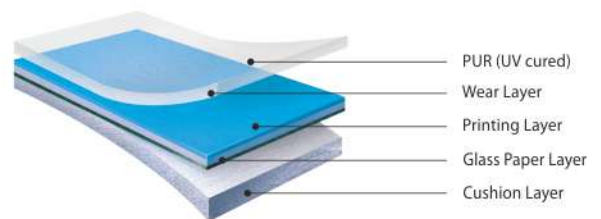
Easy cleaning and low maintained cost

- No Wax & No Polish applied on the PUR treated surface

## Applications :

Shop, Hospital, School Etc.

## Structure



DLT 8834-01



DLT 9102-01



DLT 9105-01



DLT 9109-01

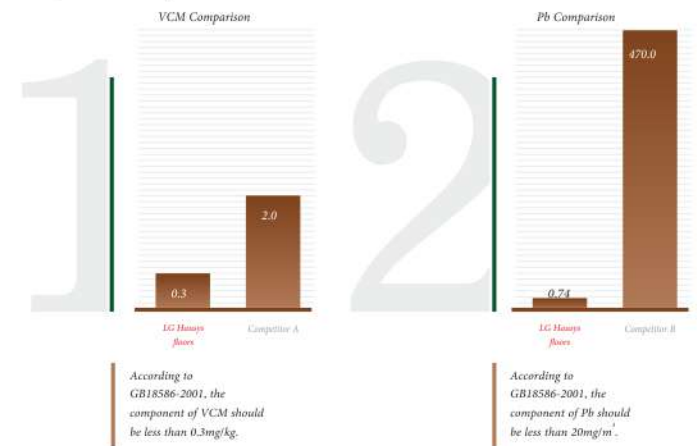
# Econo Wood

## Specification

Size : 2.0T: 2.0mm(T) x 180mm x 920mm(L)

## Features :

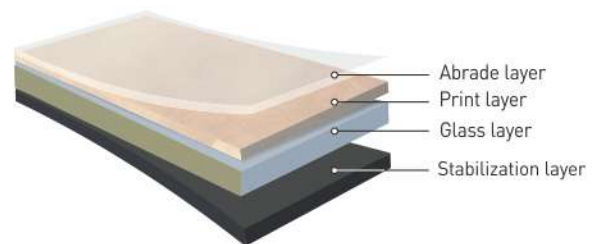
Component comparison



## Applications :

Office, Retail and Hospitality

## Structure



DEW 2228



DEW 2561



DEW 2712



DEW 2751



DEW 2752



DEW 2753



DEW 2774



DEW 2775



DEW 3201



DEW 6621



# Leisure

## Specification

Size : (T) 4mm x (W) 1.8m x (L) 16m/Roll

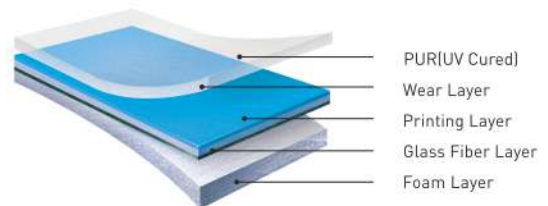
## Features :

- Sports flooring properties favorable for light activities.
- Solid colors and natural wood patterns creates optimistic atmosphere.
- Phthalate and heavy metal free appropriate for educational area.

## Applications :

Gymnasium, Sports Center, Education

## Structure



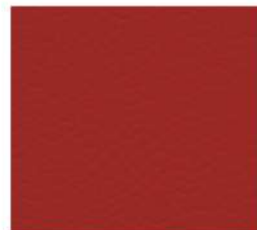
LES 0055-01



LES 0056-01



LES 2502-01



LES 6200-01



LES 6303-01



LES 6400-01



LES 6501-01



LES 6606-01



LES 6901-01



### Specification

Size : (T) 6mm x (W) 1.83m x (L) 13m/Roll

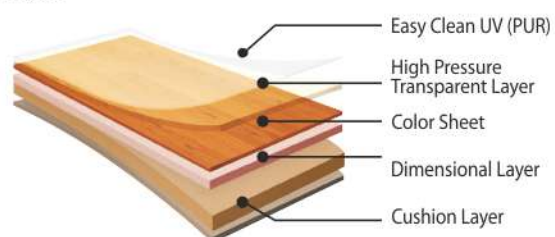
### Features :

- Shock and noise absorption :  
Cushion layer minimizes shock damage and surface noise
- Strong resistance to scratch :  
Not easily worn out against heavy traffic
- Low maintenance cost and anti-bacterial :  
Superior resistance to outer contaminants and bacteria

### Applications :

Education, Gymnasium, Yoga, Library, Preschool

### Structure



EQF 8314



EQF 8577



EQF 9511



EQF 9512



# Rexcourt

## Specification

Size : (T) 6.5mm x (W) 1.8m x (L) 15m/Roll

## Sports Features :

- Vertical deformation (EN 14809)
- Superior ball rebound (EN 12235)
- Behavior under a rolling load (EN 1569)
- Resistance to static load (EN 1516)
- Shock absorption (EN 14808)
- Friction (EN 13036-4)

## Features:

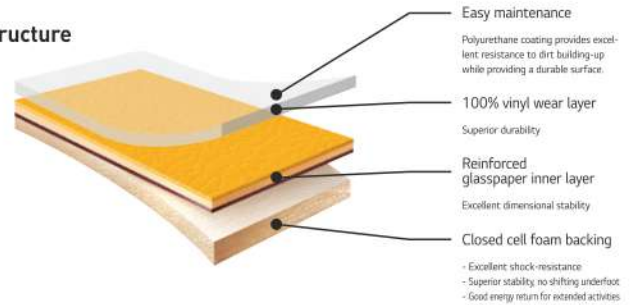
### The world leader in sports floorings Rexcourt

- Outstanding footstep sound absorption.
- 1.0mm wear layer ensure superior durability.
- Closed cell foam backing layer enhance walking Comfort and reduce fatigue.
- Anti bacteria treatment.
- Reinforced fiberglass layer prevent deformation From shrinkage.

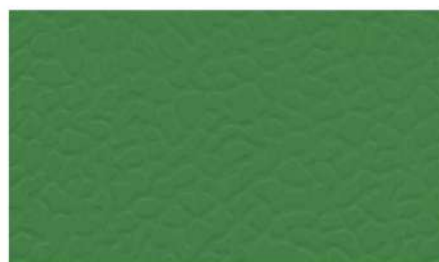
## Applications :

Sports, Gymnasium, Multipurpose

## Structure



SPF 6400



SPF 6606



SPF 6901

# Origin

## Specification

Size : (T) 2mm x (W) 2m x (L) 20m/Roll

## Features :

Superior Durability

- Not easily worn out against heavy traffic
- Wear Group T(EN 660-2)

DEEP CLEAN UV+ Surface Treatment

- High-density PUR surface treatment allows strong iodine resistance and anti-bacterial effect.

Phthalate & Heavy Metal Free

- No hazardous ingredients used during production.
- Use 100% Phthalate free plasticizers only.

## Applications :

Health Care, Education, Retail

## Structure



High-density  
PUR treatment

Thickness 2.0mm  
(Homogeneous Sheet)



SMO 5202



SMO 5204



SMO 5206



SMO 5207



SMO 5208



SMO 5216



SMO 5217



SMO 5219



SMO 5231



## Specification

Size : (T) 2mm x (W) 2m x (L) 20m/Roll

## Features :

Deep Clean UV Surface treatment

- High density PUR treatment allows strong anti-scratch & anti-contamination

Phthalate & Heavy metal free

- Use 100% phthalate free plasticizers only
- No hazardous ingredients used during production

Design Competitiuues

- 2-stage & chip-in-chip marbling technique applied for mind comforting design

## Applications :

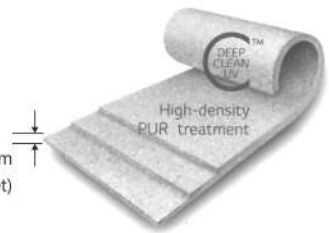
Healthcare, Education, Retail

## Structure



High-density  
PUR treatment

Thickness 2.0mm  
(Homogeneous Sheet)



SMU 4203



SMU 4205



SMU 4207



SMU 4208



SMU 4213

# Conductive Tile

## Specification

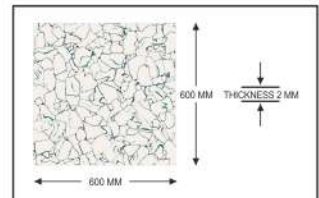
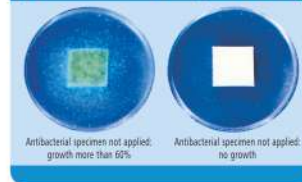
Size : (T) 2mm x (W) 600mm x (L) 600mm/Tile

## Characteristics

- Superior static control terminates static generation protecting sensitive equipment.
- Perfect for access panel floors as well as direct installations.

## Anti Bacteria

### Evaluation microbial action (ASTM G21-1996)



## Structure



A homogeneous solid vinyl tile with conductive elements distributed throughout its entire thickness.

StaticPulse is the ultimate solution to today's technological environments where static electrify is more than the annoying nuisance of a simple shock. Electrostatic discharges can damage or degrade sensitive electronic components, ignite flammable gases and cause equipment malfunction .

## Application

### Clean Rooms

StaticPulse meets requirements in clean room as strict as class 10 based on its high-tech know-how by over 700 research and manufacturing staff. It has no free carbon to contaminate the clean room and low out gassing emission and is independent of room temperature and humidity. It is highly suitable for special clean room maintenance techniques, Semiconductor, Microelectronics, Optics, Aerospace, Pharmaceuticals, Biotechnology, Etc.

### Access Flooring

StaticPulse is suitable for use on access flooring. It can easily be perforated without risk of rough edges or the tile cracking or breaking. Major manufacturers of raised or access flooring are experienced in the use of Staticpulses.

### Health Care

Staticpulse removes static to prevent dat errors that may occur with high tech visual medical recoupment such as CT SCAN, MRI, and other sensitive equipment by static discharge.

### Electronics Manufacturing Assembly, Test Areas

StaticPulse is a permanently installed material that help protect sensitive electronic devices, assemblies, and product from personnel generated electrostatic discharge.

### Computer and Electronic

### Equipment and Telecommunications Environments

Staticpulse controls static discharges into computer terminals or other sensitive electronic equipment thus preventing damage to internal circuitry, incorrect entries or retrieval loss of computer memory or other malfunction. It protects large data processing facilities, computerized typesetting and drafting equipment, process control equipment, communications installations and other static sensitive equipment and instruments.



C 6200



C 6062



C 6111





# Wall Covering

## (Medistep Wall)

### Specification

Size : (T) 1.0mm x (W) 2m x (L) 40m/Roll

### Features :

Superior dimensional stability :

- High resistance to heat and humidity due to glass paper inlaid structure

Low maintenance cost and anti-bacterial :

- Easy maintenance with specially treated PUR
- Superior resistance to outer contaminants and bacteria

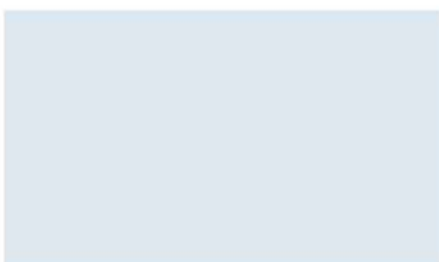
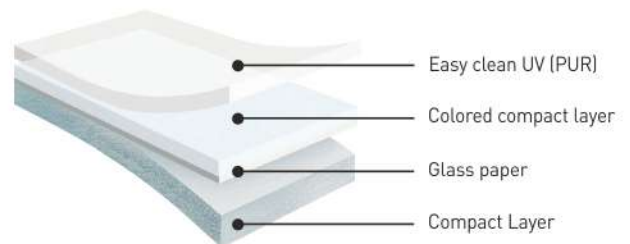
Strong resistance to scratch :

- Not easily worn out against heavy traffic

### Applications :

Hospital, Corridor and Kindergarden

### Structure



WAL 2002-01



WAL 2007-01



WAL 2008-01



Authorized Distributor

Delight Interiors India Pvt. Ltd.

delightinteriors@gmail.com, [www.delightinteriors.com](http://www.delightinteriors.com)