



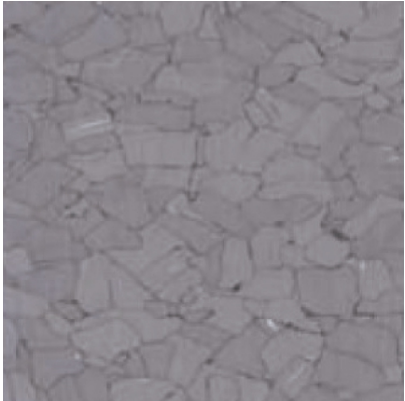
Conductive Tile

Electronics, IT, Healthcare, Access Floor, Clean Rooms

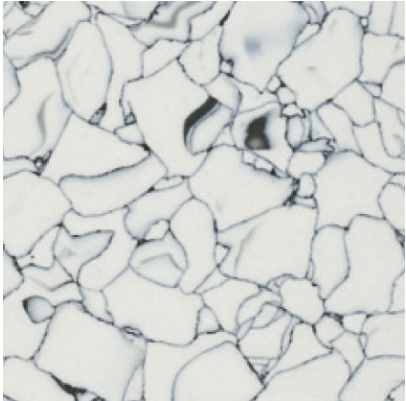




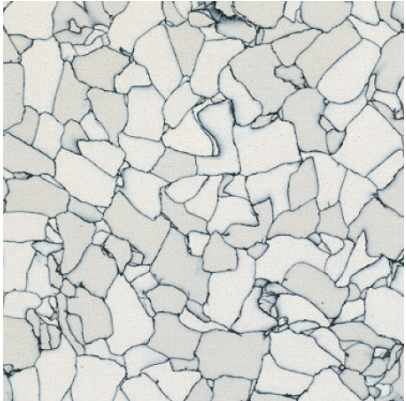
LG Hausys
floors **CONDUCTIVE TILE**



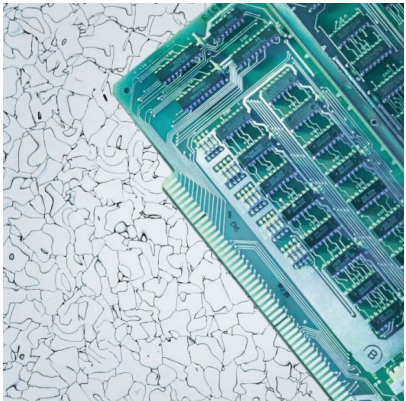
C-6062



C-6111



C-6200



Conductive Tile

Technical Specification

ITEM	Standard Test Method	Specification	Test Result CONDUCTIVE TILE	
ELECTRICAL / ELECTROSTATIC PROPERTIES				
Electrical Resistance	ESD S 7.1	Conductive : 2.5 x 10 ⁴ - 10 ⁶	2.5 x 10 ⁴ - 10 ⁶	
Static Generation	AATCC-134		0.1KV	
Static Decay	Federal Test Method 101B Method 1046	<0.05 sec	0.01 sec	
Other Properties				
CEN Classification	EN 685		Class 34+43	
Composition of Material	ASTM G 1700, Certificate of Compliance		Homogeneous	
Thickness	ASTM F 386, EN 428	As specified + 0.13 mm	Meets Standard	
Nominal Sizes	ASTM F536, EN 427	< + 0.4mm/304.8mm	Meets Standard	
Squareness	ASTM F 2055	Maximum 0.25mm	Meets Standard	
Residual Indentation	ASTM F 1914 EN 433	Average less than 8% max. single reading 10%	<8 %	
Flexibility	ASTM F 137	no crack or break	No Crack or break	
Dimensional Stability	ASTM F 2199, EN 434	<0.51mm/304.8mm	Meets Standard	
Resistance To Chemicals	ASTM F 925 EN 423	No more than a slight change in surface dulling, surface attack or staining	No more than a slight change in surface dulling, surface attack or staining	
Resistance To Heat	ASTM F 1514	E < 8ave., max	Meets Standard	
Resistance To Light	ASTM F 1515	E < 8ave., max	Meets Standard	
Static Load Limit	ASTM F 970-93	—	0.005" (at 2500 psi), 0.127 mm (at 175kgf/cm2)	
Smoke Density	ASTM F 662	<450	<450	
Flame Spread	ASTM E 84, NFPA 225		<75	
CVCM	ASTM E 595		1.88%	
Thermal conductivity	DIN 52612		0.309 W/(m.k)	
Critical radiant flux	ASTM E648, NFPA253		Class 1 (>0.45 w/cm2)	
Abrasion resistance	ASTM D 1044 CS-10-F Wheel 500gm Weights		Cycle	% Gauge Loss
			25,00	0.22
			5,000	0.44
			7,500	0.65
			10,000	0.86
Resistance to wear	EN 660-1		Group M	
Castor chair Suitability	EN 425		No damage	
Color Fastness	EN ISO 105 B02		At least 6	
Standard for Health care facilities	NFPA 99		Confirms to the requirement of NFPA 99 in effect at the time of installation	
Fulfills product requirements	EN 649		Yes	
underwriters laboratories	UL 779		Meets UL Standard	
Burning characteristics	EN 13501-1		Bfl-S1	
Warranty				
Free from defects in workman ship and material			Five Year	
Conductivity			Life time	

LG Hausys
floors

CONDUCTIVE TILE

- ☒ Consistent and stable electrical properties
- ☒ Phthalate Free Plasticizer
- ☒ Strong resistance to bacterial growth



Our Papular Products :

Easy Clean Pet	Residential	1.8mm x 1.83M x 40/50M
Palace	Residential, Office	1.5mm x 2M x 25M
Bright	Residential, Office, Retail	1.6mm x 2M x 25M
Supreme	Office zone, Retail, Multipurpose	1.8mm x 2M x 20M
Delight	Shop, Hospital, School Etc.	2.2mm x 2M x 20M
Leisure	Gymnasium, Sports Center, Education	4mm x 1.8M x 16M
Eq Floor	Gymnasium, Yoga, Library, Preschool	6mm x 1.83M x 13M
Rexcourt	Sports, Gymnasium, Multipurpose	6.5mm x 1.8M x 15M
Origin	Healthcare, Education, Retail	2mm x 2M x 20M
All Road	Healthcare, Education, Retail	2mm x 2M x 20M
Econowood	Office, Retail, Hospitality	2mm x 180mm x 920mm
Unite	Healthcare, Education, Retail	2mm x 2M x 20M

LG Hausys
Authorized Distributor

Delight Interiors India Pvt. Ltd.
delightinteriors@gmail.com, www.delightinteriors.com